

Analysis of Cyberport Expansion materials presented to Legislative Council

分析數碼港就擴建項目 向立法會提交的文件

11 June 2021

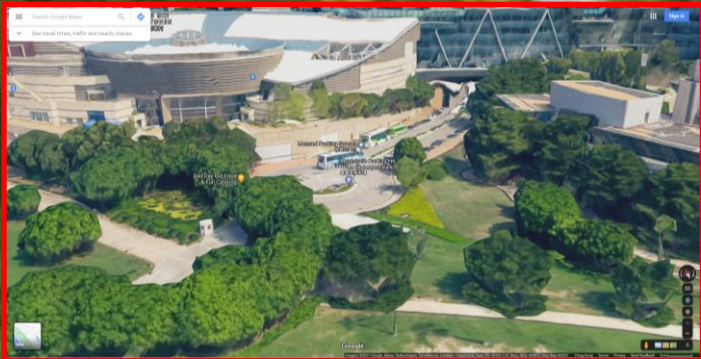
Permitted roof structures?
未有顯示天台結構物



Connection to Sandy Bay missing?
未有將海濱長廊連接至大口環?



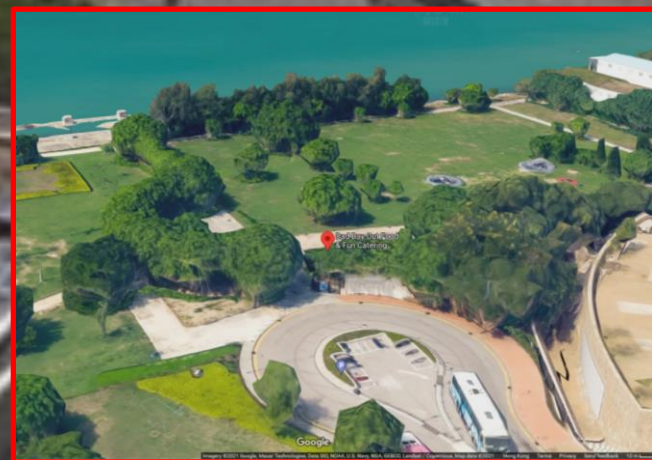
Elevated walkway in the park area – obstacle and visual impact?
行人天橋設計會否造成障礙及影響景觀?





Concrete pier without shade?
碼頭缺乏上蓋?

Entrance road for car park or emergency access only?
公園旁邊的通道是否只供緊急車輛使用？或是停車場出入口？



Grass replaced with concrete path without shade along the waterfront?
使用混凝土取代現有海濱的草地及樹木?

An aerial photograph of a city intersection. A roundabout is visible in the center, surrounded by a green-paved area. To the left is a large, multi-story building with a flat roof. To the right is a modern building with a curved, glass facade. The surrounding area includes trees, sidewalks, and other urban infrastructure.

Trees and shade gone? Replaced with roundabout?
現有的樹木及遮陰地方被回旋處取代？



Tell us what you want in the park!

你想公園有啲乜?

www.paulzimmerman.hk

